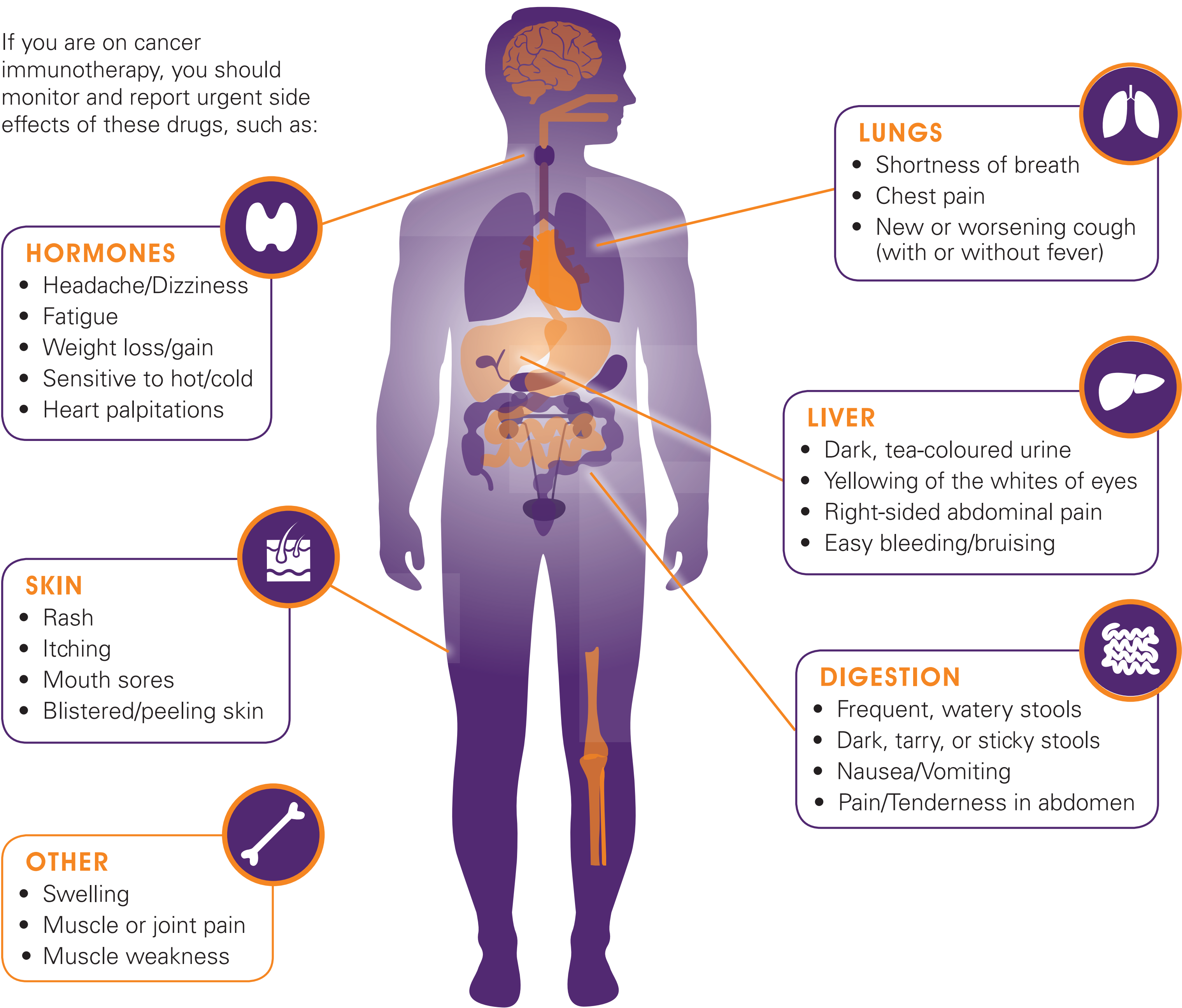


If you are on cancer immunotherapy, you should monitor and report urgent side effects of these drugs, such as:



You may use this chart as a guide for reporting your symptoms.

	RECORD & DISCUSS AT NEXT APPOINTMENT	CONTACT NURSE/HCP/ CANCER CENTRE	GO TO EMERGENCY ROOM
Skin	Redness; Flushing	No improvement with cream (24 hrs); itchy	
Digestion	2-3 bowel movements above normal	More than 2-3 bowel movements above normal	Blood (dark, tarry); mucus; abdominal pain
Liver		Right-sided abdominal pain	Yellowing in whites of eyes; dark or tea-coloured urine
Lungs		New cough	Sudden shortness of breath
Hormones		Increased fatigue	Chest pain; heart irregularities